



The Geological Society of London:
East Midlands Regional Group
Evening Lecture



Carbon Capture and Storage

With

Dr Chris Rochelle (BGS)

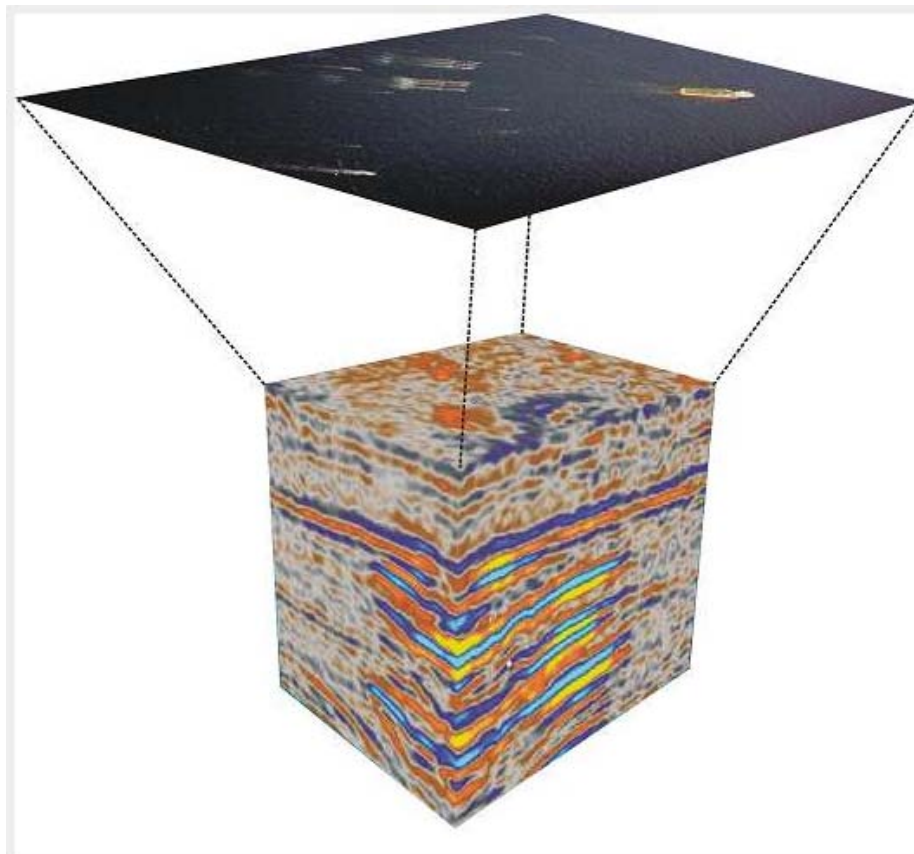


Figure 2:3D seismic survey, showing acquisition vessel and subsurface 'cube' of data (Images courtesy of Statoil, Veritas and BP).

Tuesday 10th November 2009

Refreshments from 6.30pm

Lecture starts at 7.00pm

Meeting Room 1, British Geological Survey,
Kingsley Dunham Centre, Keyworth, Nottingham, NG12 5GG

-- All welcome --

EMRG Convener: Helen Burke
hbu@bgs.ac.uk 0115 9363053