

# ESSP

## Environmental Science to Services Partnership

NEWSLETTER

November 2015



ESSP is a partnership of six leading UK public sector environmental science organisations sharing a common goal of delivering services, benefit and economic growth from their capabilities.



British Geological Survey  
NATURAL ENVIRONMENT RESEARCH COUNCIL



Centre for Ecology & Hydrology  
NATURAL ENVIRONMENT RESEARCH COUNCIL



Environment Agency



Met Office



NERC  
SCIENCE OF THE ENVIRONMENT



Ordnance Survey

DATA  
SPRING

## Introducing DataSpring

ESSP are developing DataSpring, our single sign-on web service providing direct access to multi-disciplinary environmental datasets from the authoritative sources across ESSP.

The ESSP partners are in a unique position to provide reliable, quality assured and authoritative environmental data sets.

With ever increasing volumes of data becoming available, users, decision makers, and advisors want help to know what data is relevant to their situation - and how to use it.

DataSpring offers a curated discovery and access portal to trusted data from across the partnership in standard formats with consistent and simplified licensing.

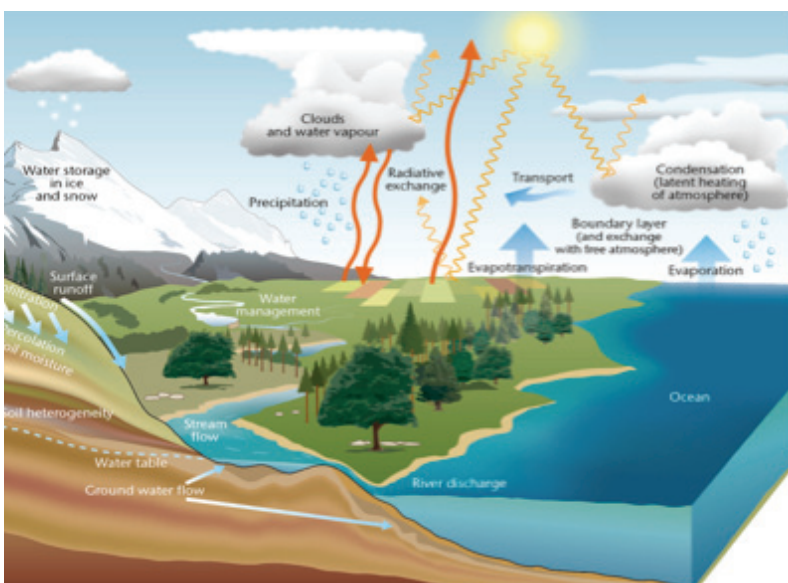
Our prototype service is now running in the cloud and we are busy improving the look and feel of it and extending the scope to include non-open datasets and data from other organisations across governments too.

Our use of API Management software provides data owners and client developers with important information about data usage and service performance.

### Connected Data for a Connected Environment

The natural environment doesn't fit into silos and environmental issues do not respect scientific disciplinary boundaries.

We know that the six partners don't hold all the environmental data that people would find useful so we've designed DataSpring



to enable other authoritative sources to easily publish their environmental data in the same one stop shop.

## Working Together

We're working together to build DataSpring, initially focussed on providing developers with frictionless access to map layers (like WMS) for view services.

More sophisticated re-use of data will require sub-setting (like WCS) and compute services (like WPS). Such concepts are already being explored by some partner organisations and through collaboration ESSP can tap into that emerging capability.

DataSpring will establish the platform that these could be built around to facilitate re-use, innovation and economic growth.

## Open Government Licence

We're also working with experts from across the ESSP to develop common licensing agreements. Building on the Open Government Licence we've agreed on a standard evaluation licence, allowing developers using DataSpring to assess the relevance of premium datasets to their work, and are now working towards common terms for a commercial licence to simplify the use of our premium datasets.

## What do you think?

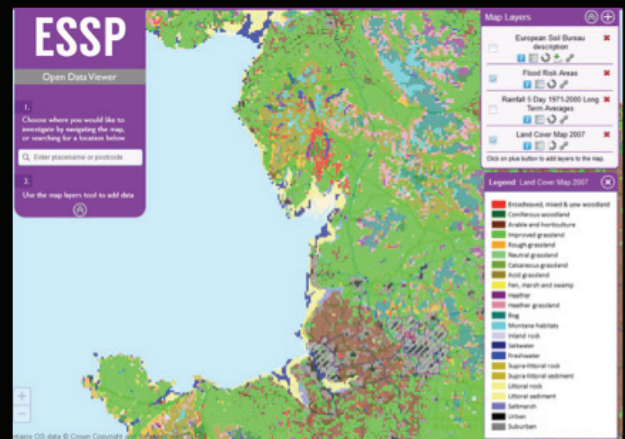
We've already shared our plans and shown our prototype to a growing list of stakeholders across Government (Defra, BIS, Cabinet Office, GDS, Digital Catapult, InnovateUK, HSL) and beyond and they share our excitement about the huge potential this brings in reducing barriers to innovation and stimulating economic growth.

## We need your help!

- What are you already doing in this area?
- Could you use DataSpring to publish your data and increase use of your data?
- Would you like to integrate our data into your services, tools or apps?

DATA  
SPRING

## Example of DataSpring on the ESSP Open Viewer website



DataSpring will support a range of services, tools and applications by offering curated access to underpinning data. Using expertise from BGS we have developed the ESSP Open Viewer as an example of how the data could be used.

We'll be working with others to add more tools, but take a look at Open Viewer by visiting our webpage

[www.ESSPartnership.org](http://www.ESSPartnership.org)  
and following the link to the Open Viewer.

## Here to Help

We'll be delighted to come and talk to you and your teams!

We are starting to roll out our prototype service in a controlled way but if you'd like to take a look just get in touch.

## Contact us:

To learn more about ESSP visit our website

[www.ESSPartnership.org](http://www.ESSPartnership.org)

or email us

[info@ESSPartnership.org](mailto:info@ESSPartnership.org)

